

FEATURES:

- +/- 1.07 acres
- 80% paved
- High traffic and visibility
- Located at the corner of Pioneer Parkway & Harker Drive
- Sale Price: \$239,000

TRAFFIC COUNTS:

W Pioneer Parkway	14,400 cpd
E Pioneer Parkway	14,700 cpd

CONTACT:

Daniel J. Maloof

dan@maloofcom.com

p. 309 693.3000

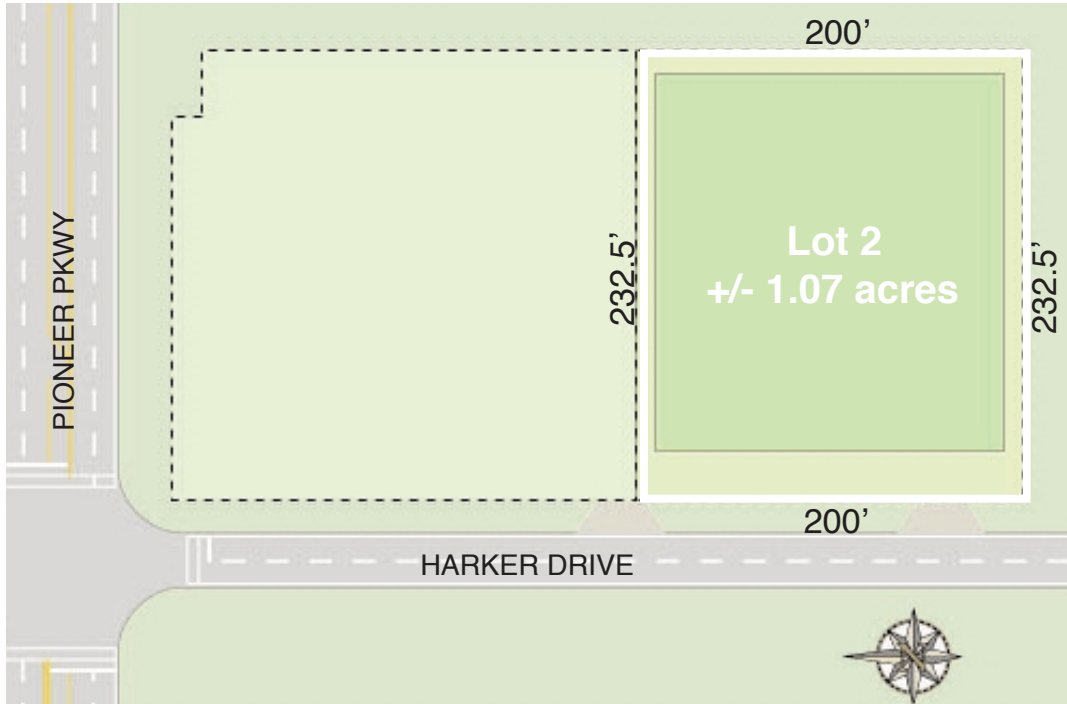
f. 309 693.3336

Maloof Commercial Real Estate Company

2411 W. Cornerstone Court, Peoria, Illinois 61614

maloofcommercial.com

SITE PLAN



Neighboring businesses include:

- Enterprise Rentals
- Finish Line Ford
- PNC Bank
- Velde Lincoln Mercy Volvo
- Circle K
- Verizon Wireless

CONTACT:

Daniel J. Maloof

dan@maloofcom.com

p. 309 693.3000

f. 309 693.3336

Maloof Commercial Real Estate Company
2411 W. Cornerstone Court, Peoria, Illinois 61614
maloofcommercial.com

VICINITY MAP

